

## COMMUNIQUÉ DE PRESSE

### **EUROBOIS AWARDS: 30 innovations in the running for the 2024 awards!**

The Eurobois exhibition will take place between 6 and 9 February 2024 at Eurexpo Lyon (France).

The show's highlights include the Eurobois Awards, the benchmark competition rewarding innovation, new releases and technological developments presented by manufacturers and stakeholders in the timber industry, which is returning in 2024!

The goal of this high-profile competition? To reward innovation, new releases and technical developments presented by manufacturers and stakeholders in the timber industry. You won't want to miss it!

As a fast-growing sector, the timber industry occupies a central position in the vital ecological and economic transition we are experiencing. By offering these players a showcase in the form of a dedicated competition, Eurobois helps to promote the dynamism and sustainable practices of the timber industry.

#### **New for 2024:**

The Eurobois Awards have a new chairman for 2024: Marc Vincent, chief executive of Xylofutur, will chair the jury for this year's awards. The only competitive cluster of its kind in France, Xylofutur has been contributing to the growth of the whole forest-timber-paper value chain for over 20 years, creating connections between businesses and researchers to promote the emergence of innovative solutions.

Initially consisting of timber professionals, institutions and students, the Eurobois Awards jury is expanding in 2024 with almost 20 trainers from the Compagnons du Devoir craftsmanship organisation. This extended jury gives the competition a new academic dimension based on excellence.

### **The 2024 Eurobois Awards**

True to their vocation as a platform for product launches, the Eurobois Awards honour industrial and manufacturing firms in the timber sector for the best innovations, new releases and technological advances on display at the trade show.

#### **CONTACT PRESSE :**

LE CRIEUR PUBLIC : Clotilde Boué  
Tél : +33 (0)7 81 34 24 19 - Mail : [clotilde.boue@lecrieurpublic.fr](mailto:clotilde.boue@lecrieurpublic.fr)  
[www.eurobois.net](http://www.eurobois.net)

## COMMUNIQUÉ DE PRESSE

The selection criteria for the Eurobois Awards are based on certification, cost control, usefulness, companies' CSR commitments, design, performance and the environmental quality of the competing innovations.

**No fewer than 21 companies have entered the competition, with 30 innovations on display!**

### A dedicated promotional tool

To showcase the competition entries, all the innovations are presented on the show website, social media and the Eurobois Connect app from January onwards.

At the exhibition itself, the contestants will have the opportunity to present their innovations in a **five-minute pitch in the Wood Arena, the show's conference space, on Tuesday 6 February, starting at 10 am**. This presentation will allow the competing companies to meet their audience while impressing the jury with their ability to champion their innovation.

The following day, the second day of the show, the jury will tour the stands hosting the shortlisted innovations. This enables the members to chat with the contestants and discover the new releases in more detail.

In addition, visitors can easily identify the competing innovations during the show thanks to dedicated signage.

**JOIN US AT THE WOOD ARENA ON 7 FEBRUARY AT 4.30 PM  
FOR THE AWARDS CEREMONY**

### A representative jury selecting the winners

The 2024 Eurobois Awards jury consists of professionals, institutions, students and trainers in the timber industry (cabinetmakers, fitted furniture designers, joiners, carpenters, etc.).

The 32 experts are brought together to encourage innovation and reward companies offering the technological progress that is essential to ensure a long-term, sustainable future for the timber sector.

#### CONTACT PRESSE :

LE CRIEUR PUBLIC : Clotilde Boué  
Tél : +33 (0)7 81 34 24 19 - Mail : [clotilde.boue@lecrieurpublic.fr](mailto:clotilde.boue@lecrieurpublic.fr)  
[www.eurobois.net](http://www.eurobois.net)

## COMMUNIQUÉ DE PRESSE

### Members of the professional jury:

This long-standing jury consists of professionals and representatives of institutions.

In 2024, the Eurobois Awards are chaired by Marc Vincent, chief executive of the Xylofutur competitive cluster.

*“The Eurobois Awards jury aims to support and promote innovation in the timber industry by encouraging technological progress and helping to publicise it.*

*Innovation is a key driver of sustainable industrial activity that respects the environment and society's needs. Xylofutur, the competitive cluster for the forestry and timber industry, helps companies to develop collaborations and partnerships and to structure, finance and pursue innovation and research projects, contributing to the influence of the sector.*

*This is why I accepted the honour and responsibility of chairing the professional jury for the Eurobois Awards. I have no doubt the competitors will offer us some exciting projects!” – Marc Vincent, chairman of the 2024 Eurobois Awards professional jury and chief executive of Xylofutur, the competitive cluster for the forestry and timber industry*

**Vincent Charroin:** Chairman – SAS Charroin Toitures

**Nicolas Da Silva:** Innovation and fuelwood project officer – Fibois

**Sabrina Fuseliez:** Deputy director – Plantons pour l'Avenir

**Arnaud Godevin:** Director – ESB

**Francis Goncalvez:** Member – CAPEB Rhône

**Raphaël Housset:** Manager – Ateliers Raphaël

**Jean-Damien Lemette:** Executive director – Chambre Française de l'Agencement

**Aurélie Payet:** Representative – AIESB

**Frédéric Sorret:** Director of procurement and commercial solutions – HASAP

**Raphaël Vergeade:** Manager – European Institute of Joinery, Fitted Furniture and Cabinetmaking within the association Les Compagnons du Devoir et du Tour de France

**Eric Vialatoux:** Member – CAPEB Rhône

**Marc Vincent:** Chairman of the 2024 Eurobois Awards jury and director of Xylofutur

### Student jury members:

For the second year in a row, a jury of students from specialist schools in the timber sector will meet to reward the new product they consider the most innovative for the future timber market.

#### CONTACT PRESSE :

LE CRIEUR PUBLIC : Clotilde Boué  
Tél : +33 (0)7 81 34 24 19 - Mail : [clotilde.boue@lecrieurpublic.fr](mailto:clotilde.boue@lecrieurpublic.fr)  
[www.eurobois.net](http://www.eurobois.net)

## COMMUNIQUÉ DE PRESSE

**Ange Charpentier:** ENSTIB – doctorate

**Elouan Le Maux:** ESB – third year

**Emma Le Saout:** CREAD – first year

**Venanzio Verrecchia:** ESB – third year

### Compagnons du Devoir jury members

#### **New in 2024: a jury of trainers from the Compagnons du Devoir**

To give the competition a more academic dimension, around twenty trainers from the Compagnons du Devoir will join a special trainers' jury. Drawing on their experience in passing on knowledge to the highest standard, these trainers will contribute their expert eyes and bring a new dimension to the jury for these latest Eurobois Awards!

*“Being a member of the Eurobois Awards jury enables the Compagnons du Devoir to stay up to date with new developments in the sector and make their voices heard. The trainers are the first contacts of tomorrow's young professionals. This makes it essential for them to stay on top of emerging trends in order to offer training in line with the market's current needs and expectations. Taking part in these types of competition enables us to put our expertise to use in serving the sector's development.”* – **Raphaël Vergeade, Manager – European Institute of Joinery, Fitted Furniture and Cabinetmaking within the association Les Compagnons du Devoir et du Tour de France – member of the 2024 Eurobois Awards trainers' jury**

**Lucile Allinger:** Cabinetmaker – trainer

**Benjamin Bianchini:** Joiner – trainer

**David Chassevent:** Joiner – trainer

**Raphaël Delabrosse:** Joiner – company director

**Franck Desnoues:** Joiner – trainer

**Manon Durbrel:** Joiner – project officer

**Antoine Flours:** Joiner – trainer

**Paul Hincourt:** Cabinetmaker – project officer

**Cédric Litkowski:** Joiner – trainer

**Florentin Lanceleur:** Joiner – trainer

**Cédric Litkowski:** Joiner – trainer

**Maxime Matras:** Joiner – trainer

**Jean Pare:** Joiner – secretary

**Jean Renou:** Joiner – trainer

**Benoit Thevenin:** Joiner – trainer

**Vincent Van Hove:** Joiner – trainer

#### **CONTACT PRESSE :**

LE CRIEUR PUBLIC : Clotilde Boué

Tél : +33 (0)7 81 34 24 19 - Mail : [clotilde.boue@lecrieurpublic.fr](mailto:clotilde.boue@lecrieurpublic.fr)

[www.eurobois.net](http://www.eurobois.net)

## COMMUNIQUÉ DE PRESSE

**Guillaume Vescovali:** Joiner – trainer

**A closer look at the innovations being presented this year**

**Here are the companies and innovations competing for the 2024 Eurobois Awards:**

### ALL ROAD

K350E trailer crane • Height to bottom of hook 31 m • Jib length 32.8 m • Max. capacity 1,500 kg • Operating radius of 22 m with 250 kg • Powerful battery – long operating time

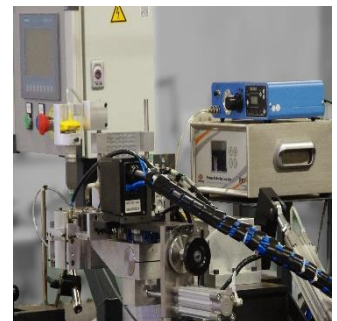


**Stand: 6G176**

### DUREL MACHINES

This machine was designed and developed by Durel Machines for recycling saw blades and thus reducing their carbon footprint.

**Stand: 5B40**



### SYSTELL ALPHACAM

#### CONTACT PRESSE :

LE CRIEUR PUBLIC : Clotilde Boué  
Tél : +33 (0)7 81 34 24 19 - Mail : [clotilde.boue@lecrieurpublic.fr](mailto:clotilde.boue@lecrieurpublic.fr)  
[www.eurobois.net](http://www.eurobois.net)

## COMMUNIQUÉ DE PRESSE

HxGN Machine Trainer: simulator designed for learners of CNC machining, incorporating all the concepts needed to prepare and produce parts. Simulation of 3 to 5 axis machine tools, milling/turning and CMMs. Developed by Hexagon.

**Stand: 6F52**



### SPIT SAS

The first 100% autonomous nail gun for structural applications and occasional fitting of metal connectors.

**Stand: 6B94**



### FESTOOL France

The CSC SYS 50 cordless table saw is compact and fits into a Systainer. It is incredibly versatile, with cutting depths and angles adjustable to a tenth of a millimetre on the digital display. Up to four presets can be saved for even greater efficiency.

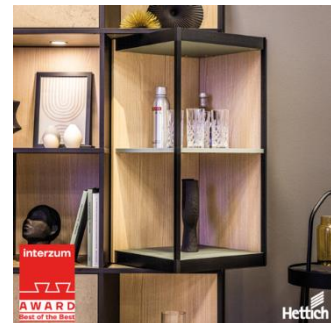
**Stand: 6E78**



### HETTICH FRANCE

The FurnSpin, with its innovative rotary movement, is focused on the future of furniture.

**Stand: 6G60**



#### CONTACT PRESSE :

LE CRIEUR PUBLIC : Clotilde Boué  
Tél : +33 (0)7 81 34 24 19 - Mail : [clotilde.boue@lecrieurpublic.fr](mailto:clotilde.boue@lecrieurpublic.fr)  
[www.eurobois.net](http://www.eurobois.net)

## COMMUNIQUÉ DE PRESSE

### VP DOLEX

EZ360 one-handed clamp with pivot handle: flexible use • Robust design • Extremely comfortable handling • Four sizes available

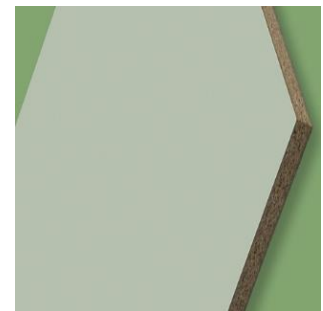
Stand: 6B88



### PFLEIDERER France

With OrganicBoard Pure P2, Pfleiderer offers decorative chipboard that preserves resources thanks to a unique raw material concept. It is made from recycled post-consumer wood (e.g. old furniture) and bio-based OrganicGlue, which is sustainable and formaldehyde-free.

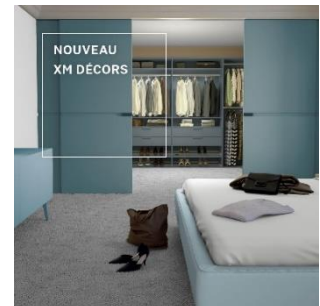
Stand: 6G30



### PFLEIDERER France

New Xtreme Mat anti-fingerprint surface finish: To keep up with the latest trends, Pfleiderer is launching seven new plain-coloured surfaces to its panel range with the Xtreme Mat anti-fingerprint finish for furniture and fittings.

Stand: 6G30



### AUWAERTER ANHANGER

The universal cantilever scaffolding for virtually all exterior ranching systems. Sliding is now easier, safer and quicker than ever before.

Stand: 6F176



### CONTACT PRESSE :

LE CRIEUR PUBLIC : Clotilde Boué  
Tél : +33 (0)7 81 34 24 19 - Mail : [clotilde.boue@lecrieurpublic.fr](mailto:clotilde.boue@lecrieurpublic.fr)  
[www.eurobois.net](http://www.eurobois.net)

## COMMUNIQUÉ DE PRESSE

### ALSAFIX

The new Alsafix 430 JDB cordless screwdriver uses an 18 V/4.0 Ah battery. Specially designed for installing screws in 4 x 30 mm strips for fixing standing seam tabs.



**Stand: 6D78**

### KNAPP GMBH

Invisible birch plywood Solid Connector. Thanks to its self-tightening tabs, this birch plywood fastener can be dismantled without the need for tools.



**Stand: 6J68**

### MFLS FOREZIENNE

The *Compagnon d'Affûtage* is a circular saw blade sharpening cobot for fitting to a Vollmer CHX 840 machine.



**Stand: 5C18**

### LEITZ France

#### CONTACT PRESSE :

LE CRIEUR PUBLIC : Clotilde Boué  
Tél : +33 (0)7 81 34 24 19 - Mail : [clotilde.boue@lecrieurpublic.fr](mailto:clotilde.boue@lecrieurpublic.fr)  
[www.eurobois.net](http://www.eurobois.net)



## COMMUNIQUÉ DE PRESSE

High-quality machining can only be guaranteed with high-performance tool clamping technology. The clamping device must combine consistently high gripping forces with great precision. These requirements apply to increasingly complex work tasks.

**Stand: 5B18**

### UNICONFORT

The Uniconfort automated combustion control system checks the humidity of the fuel entering the Uniconfort biomass boiler and automatically adjusts the combustion air and grille movement, making the combustion itself more efficient.

**Stand: 5C21**

### ROBERT BOSCH FRANCE

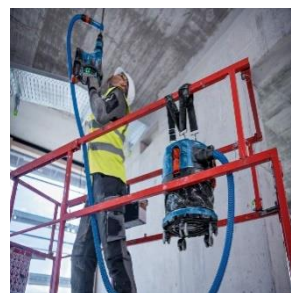
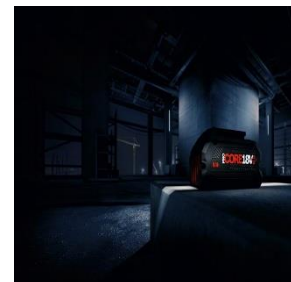
ProCORE18V+: a new cell technology for greater battery efficiency!

**Stand: 6D93**

### ROBERT BOSCH FRANCE

New 18 V M-class wet/dry dust extractor with Auto-Start system and semi-automatic filter cleaning.

**Stand: 6D93**



#### CONTACT PRESSE :

LE CRIEUR PUBLIC : Clotilde Boué  
Tél : +33 (0)7 81 34 24 19 - Mail : [clotilde.boue@lecrieurpublic.fr](mailto:clotilde.boue@lecrieurpublic.fr)  
[www.eurobois.net](http://www.eurobois.net)

## COMMUNIQUÉ DE PRESSE

### ROBERT BOSCH FRANCE

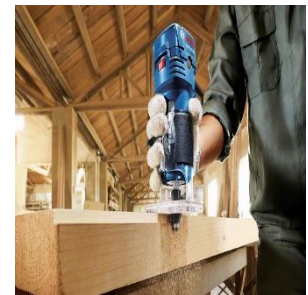
The transmitter/receiver automatically activates or deactivates your dust extractor: using a dust extractor means having to manage two devices instead of one. The Auto-Start system, with transmitter and receiver modules, enables synchronised operation of your cordless tools and your dust extractor.

**Stand: 6D93**



New ultra-compact router enabling precise, effortless, one-handed guidance.

**Stand: 6D93**



### COSENTINO

Pietra Kode, the new Dekton collection designed by architect and designer Daniel Germani. Inspired by Italian architecture, Pietra Kode reinvents classical Vicenza, Travertine and Ceppo di Gre stone using the technological virtues of Dekton.

**Stand: 6K44**



### COSENTINO

The new Le Chic collection, focused on the beauty of the veined patterns, demonstrates all the sophistication of Silestone®. Six new colours with expressive veins and metallic accents contrasting with neutral backdrops like cream or deep blues and blacks.

**Stand: 6K44**



### CONTACT PRESSE :

LE CRIEUR PUBLIC : Clotilde Boué  
Tél : +33 (0)7 81 34 24 19 - Mail : [clotilde.boue@lecrieurpublic.fr](mailto:clotilde.boue@lecrieurpublic.fr)  
[www.eurobois.net](http://www.eurobois.net)

## COMMUNIQUÉ DE PRESSE

### COSENTINO

Four colours – Lime Delight, Concrete Pulse, Brass Relish and Cinder Craze – make up the discreet charm of this series, rich in mineral shades and soft tones.

**Stand: 6K44**



### BLUM FRANCE SARL

With its compact, narrow design, AVENTOS HKi fits perfectly into the side of the cabinet body. The fitting blends into the furniture and opens up new possibilities for high-end aesthetic design. The result is a refined piece of furniture and complete design freedom.

**Stand: 6G36**



### SALICE FRANCE

FOLDER is a brand new system and the only one of its kind on the market. First of all, it is a sliding system for folding doors, power-assisted and damped for perfectly smooth movement, with automatic opening and closing. But it is also a revolutionary system for complete access to enclosed spaces.

**Stand: 6G12**



### CONTACT PRESSE :

LE CRIEUR PUBLIC : Clotilde Boué  
Tél : +33 (0)7 81 34 24 19 - Mail : [clotilde.boue@lecrieurpublic.fr](mailto:clotilde.boue@lecrieurpublic.fr)  
[www.eurobois.net](http://www.eurobois.net)

## COMMUNIQUÉ DE PRESSE

### JOINT DUAL

The DUAL PURE range is an innovative, minimalist joinery concept with concealed vents for structural sealed glazing. This unique design enables maximum light to pass through thanks to the slim frames. It is available in wood or mixed wood/aluminium versions.

**Stand: 6B106**



### LENNIE BV

The IPx dual-thread A4 stainless decking screw is ideal for corrosive environments. Its diamond point enables aggressive pre-drilling even in the hardest exotic woods. The hexagonal convex flat head and “whirlpool-shaped” rasp ensure faultless tightening and finish.

**Stand: 6A94**

The FWx carpentry screw has an extra-flat hybrid head and a cup beneath the head ideally suited to drilling in metal casings (skids, brackets, etc.). A DXAS+ thread combines a point and a “harpoon” tightening node for unparalleled screwing and tightening performance.

**Stand: 6A94**



BIVI, a LENNIE brand, is expanding its timber construction range with an innovative assembly solution for carpenters, timber-frame builders and landscapers – a portable safety template for making traditional joints for timber structures.

**Stand: 6A94**



### CONTACT PRESSE :

LE CRIEUR PUBLIC : Clotilde Boué  
Tél : +33 (0)7 81 34 24 19 - Mail : [clotilde.boue@lecrieurpublic.fr](mailto:clotilde.boue@lecrieurpublic.fr)  
[www.eurobois.net](http://www.eurobois.net)

## COMMUNIQUÉ DE PRESSE

### WOOD MIZER FRANCE

The Wood-Mizer LT15CLASSIC WIDE B sawmill offers a forward-looking response to the sustainability challenges of the woodworking equipment industry by presenting the first fully autonomous lithium-ion battery-powered sawmill capable of a full day's work.

**Stand: 5F60**



### KNAPP GMBH

FIYU® FAST is carefully designed down to the smallest details. Ingenious wood assembly with self-tightening, invisible connectors. Fast, secure clip-together assembly in a 7 mm groove; can be dismantled and glued. Ideal for wood and engineered timber from 16 mm.

**Stand: 6J68**



**Come and take part from 6 to 9 February at Lyon Eurexpo (France)**

**Visitor registration: [www.eurobois.com](http://www.eurobois.com)**

### ABOUT THE ORGANISER

#### GL events Exhibitions Opérations

With 200 events organised worldwide for professionals and the general public, GL events Exhibitions Opérations has unequalled expertise in organising exhibitions and trade shows – a business that must stay abreast of increasingly specialised marketing, communication and organisational techniques while retaining close ties with market players. The Eurobois exhibition is organised by the **GreenTech+** division, which also manages seven other events: BePOSITIVE, Open Energies, Expobiogaz, Hyvolution, Paysalia, Piscine Global, Rocalia.

**GreenTech+** is a division of the GL events group, providing a unique shop window born from the synergies between exhibitions that touch on common themes of ecological innovation and sustainable development.

GL events created **GreenTech+** to play a full part in the world's major environmental issues, based on the only format of its kind, building bridges between the sectors of the future and maximising their visibility. GreenTech+ is an accelerator committed to accompanying the sector's stakeholders in their developments and in their search for the solutions of tomorrow, while instilling an ever-greater eco-awareness among our citizens.

#### CONTACT PRESSE :

LE CRIEUR PUBLIC : Clotilde Boué  
Tél : +33 (0)7 81 34 24 19 - Mail : [clotilde.boue@lecrieurpublic.fr](mailto:clotilde.boue@lecrieurpublic.fr)  
[www.eurobois.net](http://www.eurobois.net)